

COMOSS PSW Series 5-Port Switch

Data Sheet

**Layer 2 Switching,
Provide 100Base-FX
connectivity for small-sized
businesses and home
networks.**

Overview

The PSW-5XXXX is 10/100Base-FX All POF switch hub, And can includes Ethernet 5 port OPTOLOCK® or SMI POF transceivers. It fully supports flow control full duplex and high-speed data transmission in POF interface. It can transmit packet(s) up to 1536/1552 bytes to meet requirement of extra long packets.

5 LED indicators are used to display each port active status. This product is really plug-and-play and requires no need other additional settings. The PSW-5 Series can fully compatible for IEEE 802.3/802.3u Fast Ethernet data communication standard. This solution can be use in any Fast Ethernet LAN, FTTH or xDSL application.



Content

CONTENT.....	2
KEY FEATURES.....	3
SPECIFICATION	4
APPLICATION.....	5
LED INDICATIONS	5
ORDER INFORMATION.....	6

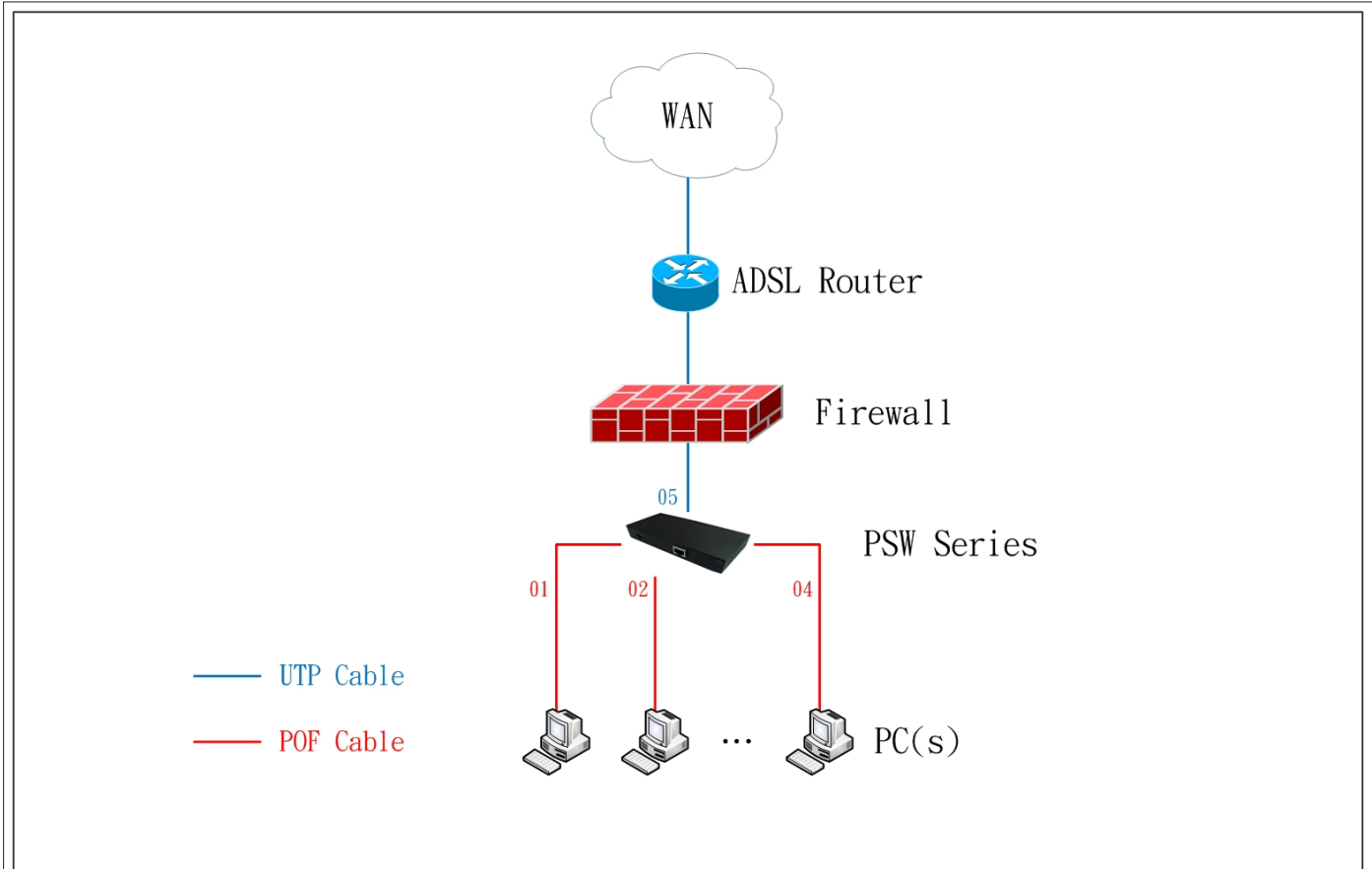
Key Features

- (1) Integrate 5 ports OPTOLOCK® or SMI optical fiber transceiver.
- (2) All port supports 100Base-FX with flow control.
- (3) Supports broadcast storm filtering function.
- (4) Supports 1536/1552 byte maximum packet length.
- (5) Plug-and-play and easy installation.
- (6) Low power consumption and low cost.

Specification

Parameter	Optical Port
Standard	IEEE 802.3u Fast Ethernet
compatibility	100Base-FX
Data Rate	100Mbps
Transmitting Length	50M at POF interface
Interface connector	POF transceiver (OPTOLOCK [®] or SMI or UTP)
Equipped cable	POF patch cord (OPTOLOCK [®] or SMI or UTP)
LED Indication	LED display act status
Operating Environment	Temperature: 0~50 °C Humidity: 10%~90%
Storage Environment	Temperature: -40~70 °C Humidity: 10%~90%(Non-condensing)
Input DC	12VDC.
Power Consumption	3W Max.
DC Power Connector	OD: 5.5, ID: 2.1 mm DC plug suitable
Dimensions (W x D x H)	142 x 67 x 28 mm
Total Weight	270g
EMC Certification	FCC certification: Part 15 Subpart B 2. CE certification: EN55022/ 55024/ 61000-3-2/ 61000-3-3

Application



COMOSS[®] COMOSS Electronic Co., LTD.

设计 Albert Liu	审核 Albert Liu
日期 2010.12.23	图号 RD-20101223

POF Home Network Diagram



LED Indications



LED	Color	Status	Function
Link/Act	Green	Blink	When any FX packet is transmitting.

Order Information

PSW - 5 O X X
(1) (2) (3) (4)

(1) 5 POF Ports.

(4) Color of case :

- X : Black.
- Y : White.

(3) Diameter Connect Type :

- 1 : 2.2mm OPTOLOCK® transceiver (Black color).
- 2 : 1.5mm OPTOLOCK® transceiver (White color).

(2) Converter Type :

- O : OPTOLOCK® POF Interface.

P.S. OPTOCLOCK® is a registered by FIRECOMMS Ltd.